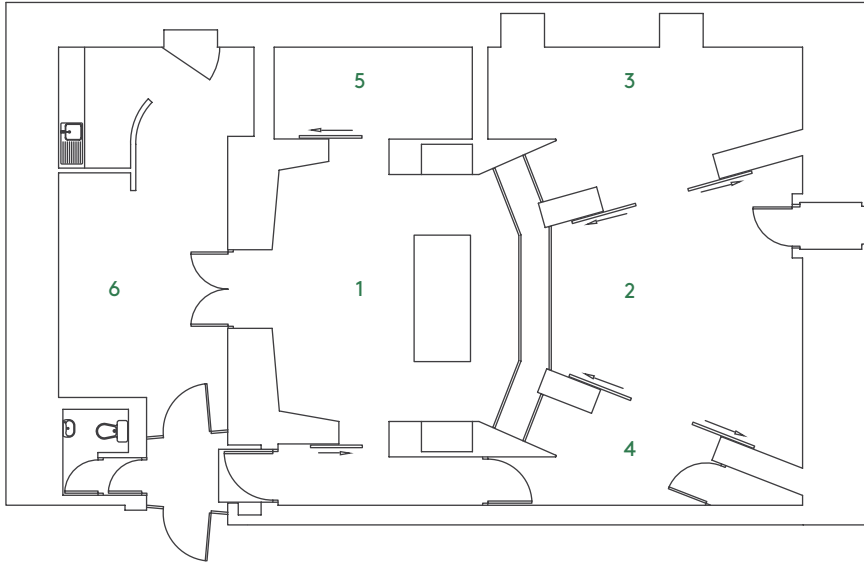




Studio B



1. Control Room 32m²
 2. Live Room 26.5m²

3. Acoustic Area 20m²
 4. Acoustic Area 12m²

5. Machine Room 9m²
 6. Recreation Area 31m²

Equipment

- SSL 4064 G series console (60 mono / 4 stereo channels)
- Avid Pro Tools 12 HDX
- Logic X
- Prism ADA-8 Converters (40 i/o)
- Genelec 1236 Main Monitoring System
- Yamaha NS10
- Nearfield monitors (subject to availability); , Unity Audio Rock, Focal Twin 6 BE, Genelec 8351a, Adams S3X-H, ProAc Studio 100, Acoustic Energy AE22, Genelec 1031a, Auratone 5c
- Bryston Amplifiers
- Emagic Unitor 8 MIDI interface
- Yamaha C7 7'6" grand piano
- Custom 8-way foldback system
- Central live area and two separate booths with additional ties in corridor and lounge
- Private reception area, lounge and bathroom

Outboard Including

- Past Neve 33105 Style Mic Pre (x2)
- Focusrite ISA 115HD 2 channel Mic Pre / EQ
- AI Smart C1 Stereo Compressor
- DBX 160 Compressor (x2)
- DBX 165
- DBX 165A
- Drawmer Dual Gate
- Empirical Labs Distressor EL8-X (with British Mode + stereo link) (x2)
- Groove Tubes Glory Comp Compressor
- Manley Stereo "Vari-MU" Limiter Compressor
- Neve 2254 Compressors with stereo link (x2)
- Prism Maselec MLA-2
- Tube Tech CL-1A
- Urei 1176 Silver Face (x2)
- GML 8200 Stereo EQ
- Prism Maselec MEA-2
- Tube Tech PE1B
- Aphex Systems Aural Exciter
- Eventide H3000 Multi FX
- Ensoniq DP4+ Multi FX
- Lexicon 480L
- Lexicon PCM 70
- Panscan Auto-Panner
- Plate Reverbs (available on request)
- Roland SDE-3000 (x2)
- Roland DimD
- TC Electronics 2290 Digital Delay / Multi FX Processor
- Yamaha REV 5
- Yamaha SPX 900 Multi FX