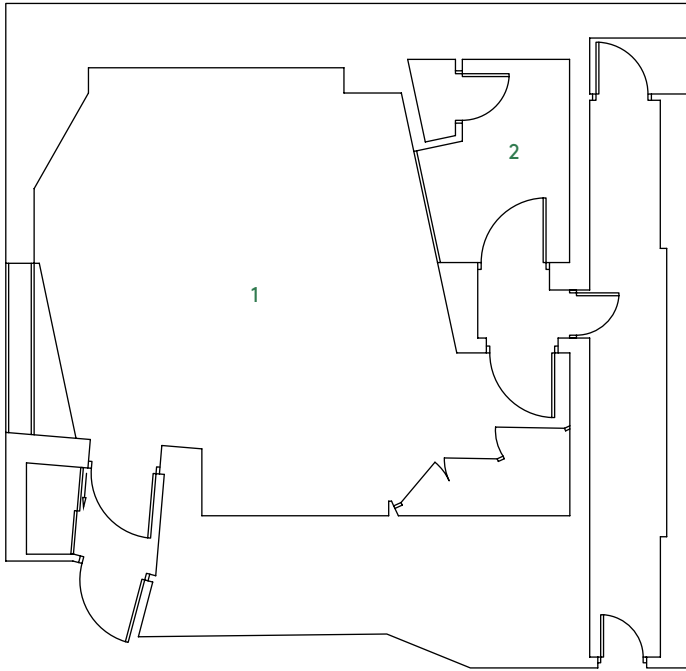




Studio E



- 1. Control Room 19m²
- 2. Overdub Booth 9m²
- 3. Machine Bay 3m²

Equipment

- SSL XL 9072 K Series Console
- Avid Pro Tools 12 HDX
- Logic X
- Prism ADA-8/ADA-8x Convertors (24 i 56 o)
- PMC BB5/XBD/MB1 active 5.1 Main Monitoring System
- Yamaha NS10
- Nearfield monitors (subject to availability); , Unity Audio Rock, Focal Twin 6 BE, Genelec 8351a, Adams S3X-H, ProAc Studio 100, Acoustic Energy AE22, Genelec 1031a, Auratone 5c
- Bryston and Quad Amplifiers
- Digidesign MIDI IO
- Overdub Booth
- Prism Maselec MLA-2
- Summit TLA 50 Tube Leveler
- Tube Tech CL-1A
- Urei 1176 Silver Face (x2)
- GML 8200 Stereo EQ
- K+H Custom Mod UE 400 2 Channel EQ
- Prism Maselec MEA-2
- Summit EQF-100
- Tube Tech PE-1B (x2)
- AMS S-DMX
- AMS RMX 16
- BEL BF-20 Flanger
- Ensoniq DP/4+
- Eventide H3000 D/SE
- Lexicon 480L
- Lexicon PCM 70
- Panscan Auto-Panner
- Plate Reverbs (available on request)
- Roland SDE-3000 (x3)
- Roland Dimension-D
- T.C. Electronics M6000
- Yamaha REV 5
- Yamaha SPX 900

Outboard Including

- Al Smart C1 Stereo Compressor
- DBX 160 Compressors (x2)
- Drawmer DS-201 Gates
- Empirical Labs Distressor EL8-X (with British Mode + stereo link) (x2)
- Manley "Vari-Mu" Stereo Valve Compressor
- Neve 33609